

Key of the Day

- SET INDEX** Unlikely to fall far if not falling below 2025 major support zone of 1,140 pts
- TECHNICAL PICKS** CRC, COM7
- S50M25** Open a short position at 743-745 pts, taking profit at 730-736 pts, **cutting loss above 750 pts**
- IVLM25** Open a long position of IVLM25 at B19.10, taking profit at B20.90, **cutting loss at B0.50 from the cost**
- GOM25** Wait and see for a new position



SET Index Support: 1,100-1,140 Resistance: 1,175

On April 2, foreigners were net buyers at B1,565m, resulting in YTD net selling of B36,852m. Institutions were net sellers at B1,045m. Proprietary traders were net sellers at B184m. Retail traders were net sellers at B336m.

SET Index this morning may hit 2025 major support zone of 1,140 pts and then rebound; it is expected to form a double bottom in Wave 5 today. If it falls below 1,140 pts, it may fall to Fibonacci Fan 38.2% at 1,060-1,100 pts (same pattern as Wave C this week). It may surpass Fibonacci Fan 50% at 1,200 pts. Otherwise, it may fall further, rise, and then fall further.

Tactic

SET Index may fall to 2025 major support zone of 1,140 pts. Next support zone is 1,060-1,100 pts.



Technical Pick

CRC Support: 24.20 Resistance: 28.00

CRC fell in the downtrend channel. It recently made a reversal from the Doji candlestick at a support zone. Then, it may drop on selling after it hits EMA10. Accumulate at B24.20. CRC underwent correction and entered a support zone. It may rebound.

Action

Buy at B24.20, taking profit at B28.00 and cutting loss at B23.40.



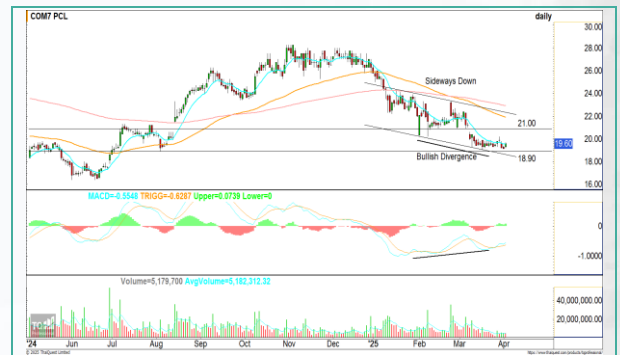
COM7 Support: 18.90 Resistance: 21.00

COM7 was taking a rest in the sideways-down channel, gathering strength around B19.00-20.20; upside may widen after it surpasses B20.20. It should not fall below the lower frame of B18.90. It may rebound to B21.00.

MACD showed a positive divergence, signaling a positive reversal, supporting this price action.

Action

Buy at B18.90, taking profit at B21.00 and cutting loss at B18.20.



TOP 5 Most Active Value

KBANK

Recommendation

Support: 161

Resistance: 165

Gathering strength

KBANK was in an uptrend, gathering strength around B161-165.

Yet, if it falls below EMA10 of B161, downside will widen.

MACD was above zero, showing positive momentum.



CPALL

Recommendation

Support: 49.25

Resistance: 52.00

Solid base

CPALL was gathering strength above a base of B49.25. It may surpass

B52.00 and enter a sideways-up channel.

MACD crossed above the signal line, showing positive momentum.



ADVANC

Recommendation

Support: 276

Resistance: 289

Rising at EMA200

ADVANC was in an uptrend. It made a bullish breakout from the inverse head and shoulders with buy rally.

RSI was over 50, entering the bullish zone.



PTTEP

Recommendation

Support: 119.50

Resistance: 125.50

Reversal

PTTEP made a reversal in the cup with handle. It made a gap-up and made a bullish breakout from the neckline with robust buying, widening upside.

MACD was above zero, showing positive momentum.



PTT

Recommendation

Support: 31.00

Resistance: 32.75

Reaching target

PTT rose to the upper frame of the V-shaped rebound channel. It was swinging sideways and gathering strength around B31.00-32.75.

MACD was above zero, showing positive momentum.



SET50

S50M25

Index Futures

Support: 690-710

Resistance: 750

On April 2, foreigners opened 4,822 net short contracts. Institutions opened 1,496 net short contracts. Retail traders opened 6,318 net long contracts. Open interest (OI) fell 45,774 (Apr 2), closing long position.

S50M25 fell on panic selling. It may fall to 690-710 pts support zone and form a falling wedge. It is expected to not form a base below 700 support zone. Otherwise, it may not be in a danger zone, but it may fall further to a new base at 650-690 pts.

It should be safe if it surpasses EMA20 of 750 pts.

Tactic

Hold a short position at 743-745 pts (Apr 1), taking profit at 690-710 pts.



Winning Probability 74.55%

Losing Probability 25.45%

SET50 Index Trading

UNDERLYING	Close	Cha	%Cha	Trading	Conclusion	
SET50	751.43	3.83	0.51%	2/4/25		
Symbol	Settle	Cha	%Cha	Vol.	OI	OI Cha
S50J25	747.40	2.7	0.4%	102	659	-41
S50K25	744.50	2.3	0.3%	95	252	-20
S50M25	744.30	2.5	0.3%	122,259	543,690	-45,774
S50U25	740.30	2.4	0.3%	9,317	40,453	-135
S50Z25	740.50	2.6	0.4%	1,954	13,902	-204
S50H26	735.30	2.6	0.4%	771	1,926	359

Source: ASPS Research

Single Stock

IVLM25 : Long

Futures

Support: 19.10

Resistance: 20.90

IVL formed a spinning bottom candlestick at the support zone, signaling a reversal, having limited downside. It is expected to rebound to B20.90.

RSI rose above the oversold zone, supporting this price action.

Tactic

Open a long position of IVLM25 at B19.10, taking profit at B20.90, cutting loss at -B0.50 from the cost



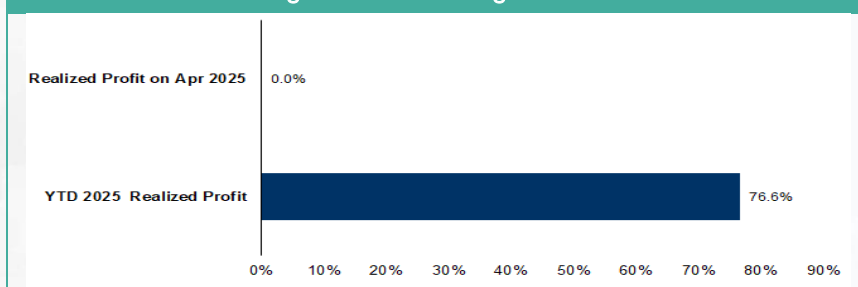
Investor Positions

SET50 Futures Long(Short) Position : Contract	Contract			Accumulated Long(Short)		
	Long	Short	Net	2 Days	1 Weeks	1 Months
Institution	14,542	16,038	-1,496	-5,910	-6,382	26,846
Foreign	62,680	67,502	-4,822	15,850	35,345	27,777
Retail	57,276	50,958	6,318	-9,940	-28,963	-54,623

Single Stock Futures Long(Short) Position : Contract	Contract			Accumulated Long(Short)		
	Long	Short	Net	2 Days	1 Weeks	1 Months
Institution	47,005	22,753	24,252	22,962	52,811	134,837
Foreign	28,531	17,993	10,538	21,099	34,184	98,206
Retail	21,973	56,763	-34,790	-44,061	-86,995	-233,043

Source: ASPS Research

Tracking Performance Single Stock Future



Source: ASPS Research

Gold Online

Futures

GOM25

Support: \$2,950-3,000 | Resistance: \$3,200-3,300

Trump announce reciprocal tariffs of 10% on all imported goods and 25% on all car import, effective on April 5. Trump imposes higher import tariff rates of 46% on Vietnam, 36% on Thailand, 34% on China, and 20% on the EU.

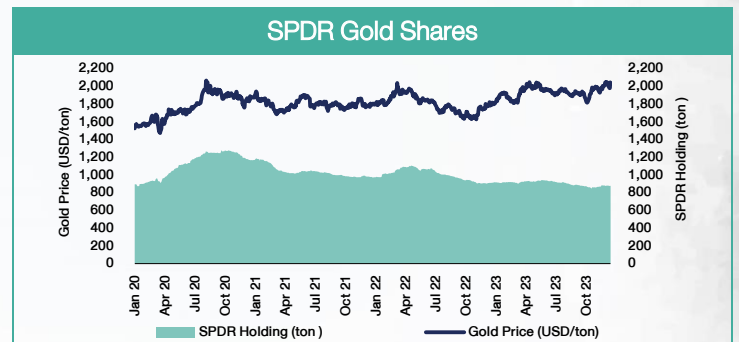
Fed Watch Tool sees 63.6% chance of an interest rate cut by 0.25% to 4.25% on June 18.

Reported this Friday, U.S. nonfarm payrolls in March are expected to rise 139,000, down from 151,000 in February, while the unemployment rate is expected to stay at 4.1%. This Friday at 22:25 (Thailand's time), Fed Chair Jerome Powell will speak on economic outlook before the Society for Advancing Business Editing and Writing (SABEW) in Arlington, Virginia.

COMEX gold price made an all-time high, extending Wave 5, rising to US\$3,200-3,300 resistance zone. Fed is expected to cut the interest rate by 0.25% on June 18. Trump imposes high reciprocal tariff rates on many countries. Still, selling on fact is likely as CCI and RSI were in the overbought zone.

Tactic

Wait and see.

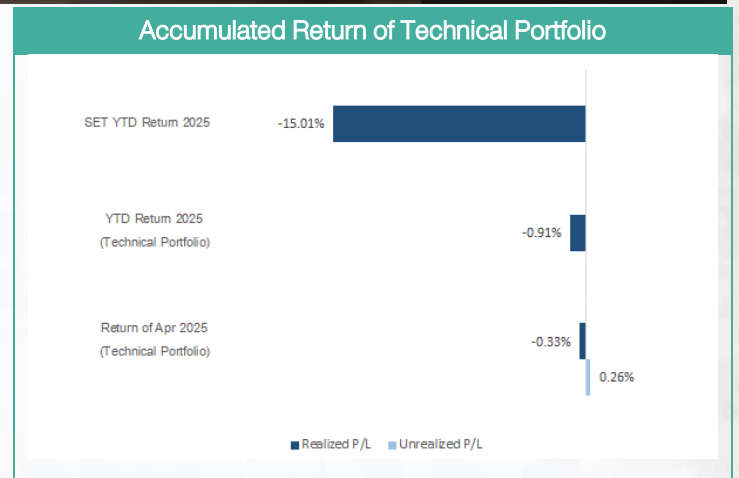


Source: ASPS Research, TQ Professional, TFXE.co.th, SPDR Gold Shares



ASPS Technical Portfolio								
Date	Stock	Target Price	Cut Loss/	Price Start	Return Close	%	Weight	Action
TECHNICAL BUY SIGNAL								
3-Apr-25	CRC	28.00	23.40	N.A.	25.75	N.A.	7.50%	Open at B24.20
3-Apr-25	COM7	21.00	18.20	N.A.	19.60	N.A.	7.50%	Open at B18.90
2-Apr-25	KTC	48.75	44.00	46.00	46.75	1.63%	7.50%	Opened at B46
2-Apr-25	SYNEX	11.70	10.10	N.A.	10.70	N.A.	7.50%	Open at B10.50
2-Apr-25	BJC	24.00	21.80	N.A.	23.00	N.A.	7.50%	Open at B22.40
2-Apr-25	SPRC	6.10	5.35	5.55	5.65	1.80%	7.50%	Opened at B5.55
1-Apr-25	CENDEL	31.50	28.25	29.25	28.25	-3.49%	7.50%	Cut loss
1-Apr-25	PTTGC	18.40	16.40	17.00	17.00	0.00%	7.50%	Opened at B17.00
1-Apr-25	OR	12.90	11.00	N.A.	12.30	N.A.	7.50%	Open at B11.50
1-Apr-25	CPF	26.00	23.50	N.A.	24.00	N.A.	7.50%	Open above B24.30
31-Mar-25	BTG	21.50	19.60	20.10	19.90	-1.48%	7.50%	Closed*
31-Mar-25	SIS	24.30	22.00	N.A.	23.00	N.A.	7.50%	Closed*
31-Mar-25	AEONTS	113.00	99.00	N.A.	107.00	N.A.	7.50%	Closed*
31-Mar-25	HMPRO	8.70	7.65	N.A.	8.55	N.A.	7.50%	Closed*
TECHNICAL SELL SIGNAL								

Source: ASPS Research



Source: ASPS Research

Table with columns: Security, CG Report, SET ESG Ratings, CAC Anti-Corruption. The table lists various companies and their associated metrics across four columns.

source: Setsmart

Certified : This level indicates practical participation with thoroughly examination in relation to the recommended procedures from the audit committee or the SEC's certified auditor, being a certified member of Thailand's Private Sector Collective Action Coalition Against Corruption programme (Thai CAC) or already passed examination to ensure independence from external parties.

Declared : This level indicates determination to participate in the Thailand's Private Sector Collective Action Coalition Against Corruption programme (Thai CAC)

"Disclaimer: The disclosure of the survey result of the Thai Institute of Directors Association (IOD) regarding corporate governance is made pursuant to the policy of the Office of the Securities and Exchange Commission. The IOD survey is based on the information of a company listed on the Stock Exchange of Thailand and the Market for Alternative Investment disclosed to the public and able to be accessed by a general public investor. The result, therefore, is from the perspective of a third party. It is not an evaluation of operation and is not based on inside information

The survey result is as of the date appearing in the Corporate Governance Report of Thai Listed Companies. As a result, the survey result may be changed after that date. Asia Plus Securities Public Company Limited neither confirms nor certifies the accuracy of such survey results.

"Disclaimer: The disclosure of the Anti-Corruption Progress Indicators of a listed company on the Stock Exchange of Thailand, which is assessed by the relevant institution as disclosed by the Office of the Securities and Exchange Commission, is made in order to comply with the policy and sustainable development plan for the listed companies. The relevant institution made this assessment based on the information received from the listed company, as stipulated in the form for the assessment of Anti-corruption which refers to the Annual Registration Statement (Form 56-1), Annual Report (Form 56-2), or other relevant documents or reports of such listed company. The assessment result is therefore made from the perspective of a third party. It is not an assessment of operation and is not based on any inside information. Since this assessment is only the assessment result as of the date appearing in the assessment result, it may be changed after that date or when there is any change to the relevant information. Nevertheless, Asia Plus Securities Public Company Limited neither confirms, verifies, nor certifies the accuracy and completeness of the assessment result."